

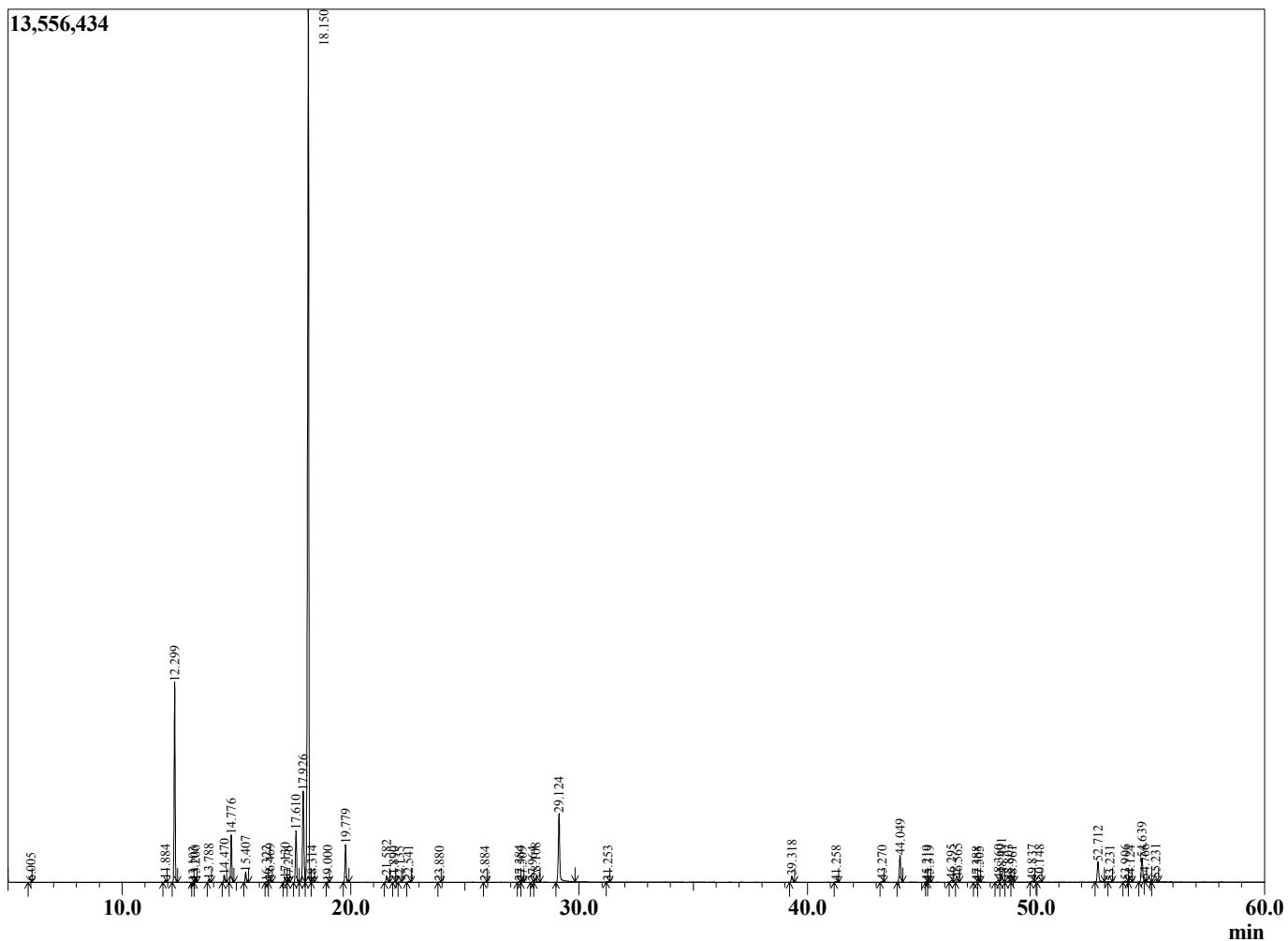
Sample Information

Sample Type : Essential Oil
 Sample Name : Melaleuca quinquenervia

Niaouli Quinquenervia
 Lot# MAE8-ET
 Country: Madagascar



Chromatogram Melaleuca quinquenervia



R.Time	Name	Area%
6.005	Methyl 2-methylbutyrate	0.01
11.884	alpha-Thujene	0.11
12.299	alpha-Pinene	10.35
13.103	alpha-Fenchene	0.02
13.200	Camphene	0.07
13.788	Benzaldehyde	0.17
14.470	Sabinene	0.41
14.776	beta-Pinene	2.65
15.407	Myrcene	0.59
16.322	Pseudolimonene	0.04
16.469	alpha-Phellandrene	0.17
17.130	alpha-Terpinene	0.23
17.276	ortho-Cymene	0.01
17.610	para-Cymene	3.22
17.926	Limonene	6.34
18.150	1,8-Cineole	58.13
18.314	cis-beta-Ocimene	0.05
19.000	trans-beta-Ocimene	0.03
19.779	gamma-Terpinene	2.28
21.582	Terpinolene	0.41
21.890	para-Cymenene	0.02
22.135	Methyl benzoate	0.01
22.541	Linalool	0.08
23.880	alpha-Fenchol	0.02
25.884	Isopulegol	0.02
27.384	delta-Terpineol	0.06
27.509	Unidentified	0.02
27.964	Unidentified	0.02
28.108	Terpinen-4-ol	0.27
29.124	alpha-Terpineol	5.43
31.253	Citronellol	0.02
39.318	alpha-Terpinyl acetate	0.46
41.258	Isoledene	0.06
43.270	alpha-Gurjunene	0.07
44.049	beta-Caryophyllene	2.03
45.219	beta-Copaene	0.02
45.319	Aromadendrene	0.07
46.295	alpha-Humulene	0.16
46.565	Alloaromadendrene	0.25
47.388	Unidentified	0.03
47.505	trans-Cadina-1(6),4-diene	0.02
48.360	beta-Selinene	0.19
48.491	Viridiflorene	0.65
48.803	alpha-Selinene	0.13
48.961	alpha-Muurolene	0.03
49.837	gamma-Cadinene	0.10
50.148	delta-Cadinene	0.12
52.712	trans-Nerolidol	1.66
53.231	Unidentified	0.05
53.906	Caryophyllene oxide	0.10
54.124	Globulol	0.03
54.639	Viridiflorol	2.20
54.766	Guaiol	0.02
55.231	Ledol	0.29
		100.00